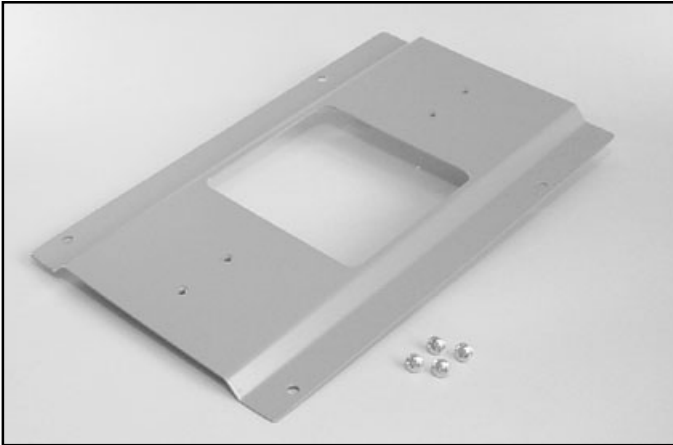


BIX Adapter Plate



Homaco's BIX Adapter Plate allows you to mount BIX blocks on to Homaco modules. The BIX plate attaches easily to the plate using the hardware included.

Features

- Use for BIX block rack/wall module applications
- Mounts 250-pair and 300-pair BIX back mounts
- Includes plate and mounting hardware
- Mounts on the following Homaco Modules:
 - 110D-600-19
 - 110D-600-XLB
 - 110D-900W
 - 110D-900-QC

Specifications:

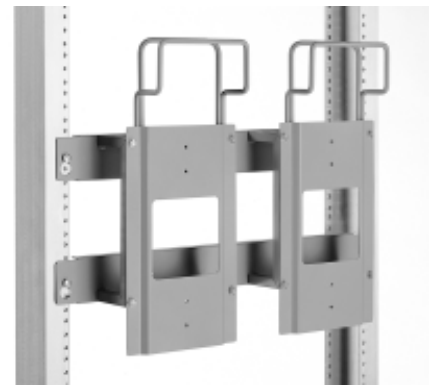
- Made of steel
- Greystone or black finish

Ordering Information:

Catalog No.	Dimensions (HxWxD)	Ship Weight
BIX-PLATE	10.38" x 5.85" x .35"	1 lbs

Greystone Finish. Add B for black finish.

Catalog No.	Description	No. of plates needed
110D-600-19	19" module	2
110D-600-XLB	23" Module	2
110D-900-QC	35" Module	3
110D-900W	37" Module	3



Two BIX plates mounted on 110D-600-19