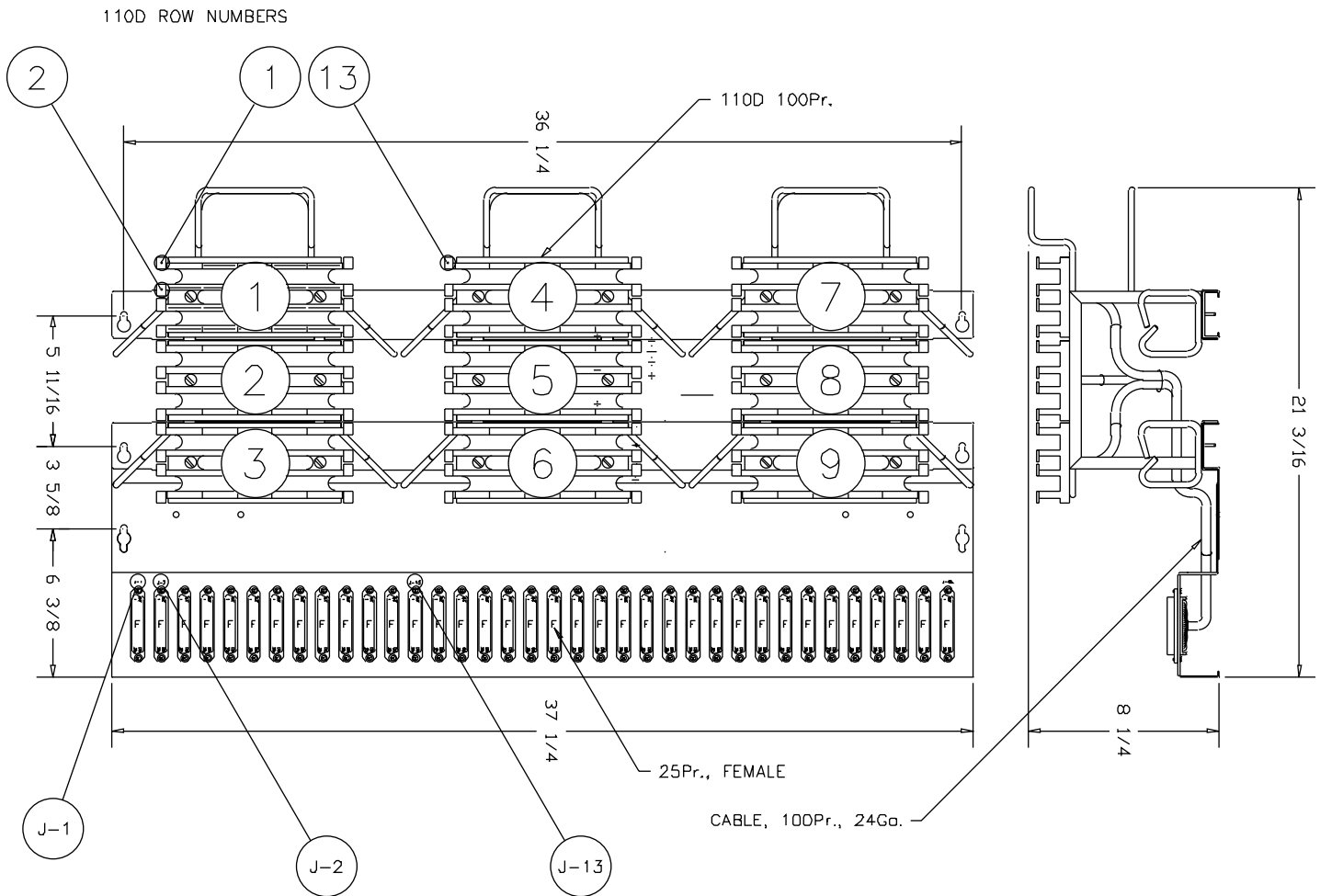


|         |      |          |         |
|---------|------|----------|---------|
| ECO NO. | REV  | DATE     |         |
| 2983    | -    | 2/22/95  |         |
| REV     | DATE | ECO *NO. | * APPD. |
| -       | -    | -        | -       |



NOTE:

1. THE WIRING COLOR CODE PATTERN IS PER THE BELL SYSTEM STANDARD CODE (REA PE-72);
2. EACH ROW OF 110D CONNECTORS IS WIRED TO ONE 25PR. CONNECTOR (E.G., No. 1 TO J-1, 2 TO J-2. . . 13 TO J-13, ETC.).

THIS PRINT IS THE PROPERTY OF HOMACO, INC. ITS USE IS VALID ONLY FOR THE PURPOSE FOR WHICH IT WAS INTENDED. ANY OTHER USE, COPY, OR REPRODUCTION, WITHOUT THE WRITTEN CONSENT OF HOMACO, INC., IS PROHIBITED.



HOMACO, INC.  
CHICAGO, ILLINOIS

ALL DIM'S  
REF. ONLY

FINISH:  
GRAYSTONE

CHECKED

CAT. # 110D-900W-PTB

TITLE: CUSTOMER USE DRAWING  
110D, 900Pr. WALL MODULE,  
PRETERMINATED

DWG. # 998-0039