

## 50M Series Double-Sided Floor Frames

Homaco 50M Double-Sided Floor Frames will help you save space, reduce cabling and jumpering costs and build consistency in your installations. When standing alone away from the wall, the frames occupy just 36" of floor space to terminate 5,400 pairs. The patented frames are equipped with three modules on each side to accommodate any block that mounts in an H89 bracket. Modules feature rounded edges to prevent damage to cables and jumpers during the installation. The frames are versatile — choose 4" vertical channels or 6" channels for extra capacity. For add-ons, frames can be junctioned together for a neat, organized look.

### Features:

- For main distribution, centralized station equipment or PBX applications
- 50M double-sided frames terminate 5,400 pairs
- Mounts any block that fits in an H89 bracket
- Blocks positioned for convenient installer access
- Available with H89 brackets factory installed to reduce on-site labor costs
- Separate horizontal and vertical jumper paths provide clearly defined jumper routing and quick tracing, reducing installation time
- Built-in horizontal rings keep jumpers organized
- 4" vertical channels or 6" to provide extra cable capacity
- Velcro® cable retainers manage vertical cables in channel uprights
- Frames can be junctioned together in multiple-frame lineups
- Pre-assembled and ready to go right out of the box
- Pre-terminated frames also are available
- Includes 12" cable runway support

### Specifications:

- 6061-T6 structural grade aluminum uprights
- Drilled and tapped on both sides
- 5/8" floor anchoring holes on base feet
- Eight locations for attaching a ground
- Listed to the UL 1863 Standard for Communication Circuit Accessory

Catalog No.	Block Capacity*	No. of Pairs	Dimensions	Ship Weight
50M Series Double-Sided Floor Frames				
<b>50M-5400LN</b>	108	5,400	84.00"H x 35.50"W x 25.25"D	160 lbs
<b>50M-5400XN</b>	108	5,400	84.00"H x 35.50"W x 18.50"D	130 lbs

\* Blocks are not included. L = patented 6" channels; X = 4" channels. Other block types can also be mounted.

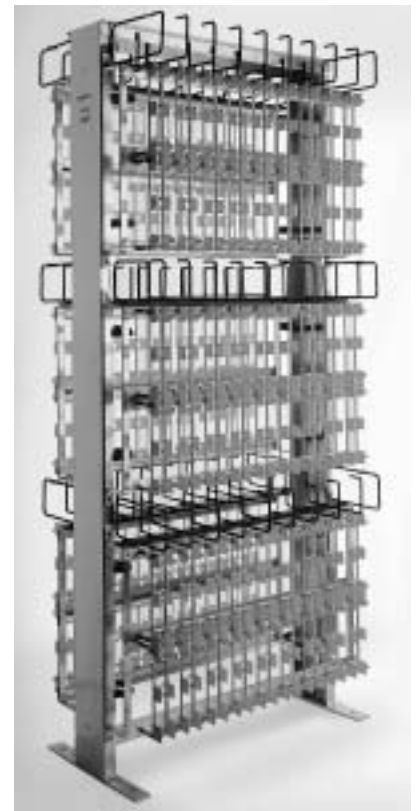
### 50M Series Double-Sided Floor Frames with H89 Brackets

<b>50M-5400LH</b>	108	5,400	84.00"H x 35.50"W x 25.25"D	175 lbs
<b>50M-5400XH</b>	108	5,400	84.00"H x 35.50"W x 18.50"D	145 lbs

L = patented 6" channels; X = 4" channels. Other block types can also be mounted.

### Homaco Hint:

The single-sided 2700L and double-sided 5400L frames feature 6" vertical channels for extra cable capacity. Modules include stand-offs that allow added room for cables and jumpers. Larger rings provide a neat installation. The additional capacity — up to 50% more for cabling, 55% for horizontal jumpering and 100% for vertical jumpering — is essential in multiple-frame lineups.



The double-sided **50M-5400LH Frame** accommodates 18 blocks\*. Other block types also can be mounted.



The double-sided **50M-5400XN Frame** accommodates 18 blocks\*. Other block types also can be mounted.