

110D-600-19 mounts two 300-pair or six 100-pair 110D blocks on a equipment rack or on the wall.

110D Wall/Rack Modules

We've designed the 110D-600-19 Module to mount on the wall or equipment rack. Whichever 110D Wall Module you choose, you'll save space, reduce cabling and jumpering costs and build consistency in your installations.

Features:

- For main distribution, centralized station equipment or PBX applications
- Mounts high-density 300-pair or 100-pair 110D blocks
- Separate horizontal and vertical jumper paths provide clearly defined jumper routing and quick tracing
- Built-in horizontal rings keep jumpers organized
- Pre-assembled and ready to go right out of the box
- Modules equipped with keyhole slots to simplify mounting

Homaco Hint:

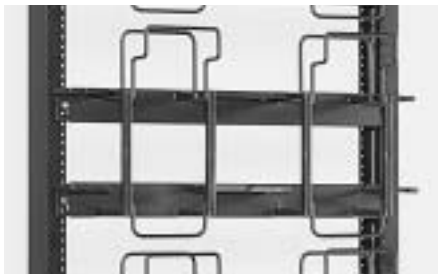
If additional cable capacity is needed, see page 70 for information on Wall Stand-Off Bracket.

Specifications:

- Structural grade steel
- Listed to the UL 1863 Standard for Communication Circuit Accessory

Catalog No.	Block Capacity*	No. of Pairs	Dimensions	Ship Weight
110D-600-19	2	600	13.44"H x 19.25"W x 5.06"D	5 lbs

Greystone finish. Add "B" to catalog number for black finish. * Blocks are not included.



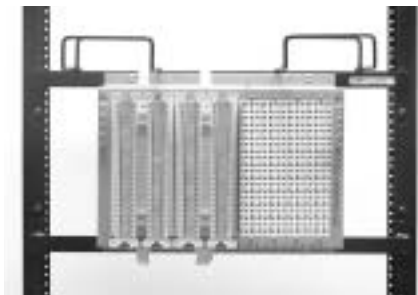
110D-600-XLB

XLBET Wall/Rack Module

- XLBET Modules mount on a existing 23" rack or wall. Modules include built-in cable management
- For main distribution, centralized station equipment or PBX applications
- Separate horizontal and vertical jumper paths provide clearly defined jumper routing and quick tracing
- Accommodates 100- or 300-pair 110D blocks
- Modules equipped with keyhole slots to simplify mounting

Catalog No.	Block Capacity*	No. of Pairs	Dimensions	Ship Weight
110D-600-XLB	2	600	12.61"H x 24.31"W x 6.63"D	6 lbs

Black finish. *Blocks are not included.



110D-1880P-XLB

Circa 1880 Mounting Bracket

Homaco Circa 1880 Mounting Brackets accommodate Circa 1880ENA1/NSC-100 protectors* and rack-mount to Homaco equipment racks. Each bracket provides built-in cable management to easily route and clearly trace jumpers, simplifying cable installation and maintenance.

Features

- Mounts (1) 100-pair Circa 1880ENA1/NSC-100 protector per module
- Keyhole module mounting for quick installation
- Six mounting brackets can be installed on each side of a Homaco rack
- Welded steel construction
- Durable black finish
- Ships fully assembled to reduce installation time
- Meets EIA-310 standards

Catalog No.	Block Capacity*	No. of Pairs	Dimensions	Ship Weight
110D-1880P-19	1	100	13.00"H x 19.31"W x 6.75"D	8 lbs
110D-1880P-XLB	1	100	13.00"H x 23.31"W x 6.75"D	8 lbs

*Protectors not included.